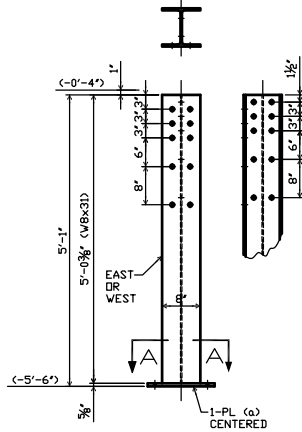
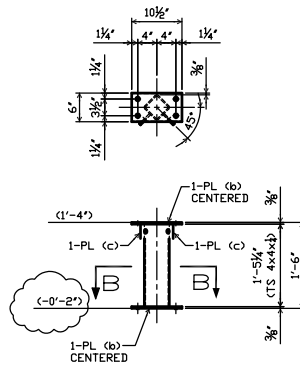


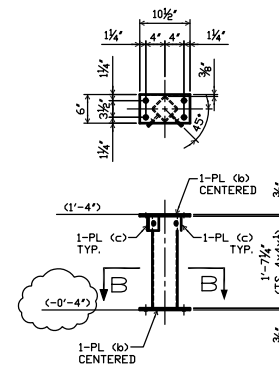
2 - COLUMNS - 1C1



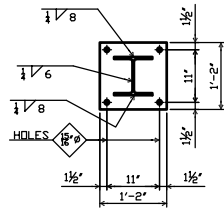
2 - COLUMNS - 1C2



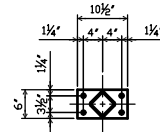
2 - STUB COLUMNS - 1C3



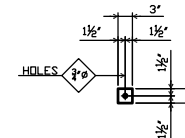
2 - STUB COLUMNS - 1C4



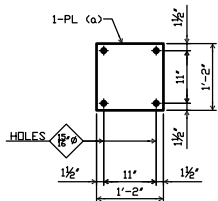
SECTION A-A



SECTION B-B



PL (C) DETAIL



4 - BASE PLATES - 1BP5

USE BELOW COLUMNS 1C1 & 1C2
REF. DETAIL 2 SHEET 4428-S2

BILL OF MATERIAL						
NO. REQ.	NR.	ASSEMBLY PART	DESCRIPTION	LENGTH		WT. OR REMARKS
				FT.	IN.	
2	1C1		COLUMN	5	5	
		2	W 8 x 31	5	4 3/8	
		2	PL 5/8 x 14	1	2	
2	1C2		COLUMN	5	1	
		2	W 8 x 31	5	0 3/8	
		2	PL 5/8 x 14	1	2	
2	1C3		COLUMN	1	6	
		2	TS 4 x 4 x 1/4	1	5 1/4	
		4	PL 3/8 x 6	0	10 1/2	
		4	PL 3/8 x 3	0	3	
2	1C4		COLUMN	1	6	
		2	TS 4 x 4 x 1/4	1	7 1/4	
		4	PL 3/8 x 6	0	10 1/2	
		4	PL 3/8 x 3	0	3	
4	1BP5		BASE PLATE	1	2	
		4	PL 5/8 x 14	1	2	

SHOP NOTES:

- ALL WIDE FLANGE & WT SHAPES TO BE A-992 STEEL (50 KSI)
- ALL OTHER SHAPES & PLATES TO BE A-36 STEEL (36 KSI)
- ALL PIPE A-53, GRADE B
- ALL ELECTRODES E70XX (L.H.)
- USE 3/16" FILLET WELD ALL AROUND U.N.O.
-
-
-

3			JOB NAME	AKRON BEACON JOURNAL TOWER
2			LOCATION	
1	05/30/08	FOR APPROVAL	TLM	CONTRACTOR
NO.	DATE	ISSUES OR REVISIONS	BY	DESCRIPTION
				COLUMNS - STRUCTURAL STEEL DETAILS
DRAWN			TLM	DATE
CHECKED				DATE
HOLES			13/16" U.N.O.	JOB NO.
PAINT			SEE NOTES	DWG NO.
216/267-0155			FAX 216/267-0609	01



Affiliated Metal Industries Inc.
16110 Brookpark Road
Cleveland, Ohio 44135
216/267-0155